

Cleeve Court:

Of necessity Cleeve Court water meadows are wet and muddy! Consequently some areas are almost impassable after heavy rains and especially in the winter. To create a circular walk on the meadows the stream routes need to be bridged with walkways. The task for Green Gym was to create one of these bridges with a raised boardwalk and handrails.



Peppard Common:

Lowland heath restoration

2nd October 2008



23rd August 2013



Did you help with this scraping?

Thanks!!!

Ling and Bell Heather have been successfully regenerated from the seed bank. - Tony

Withymead:

We were divided into 2 groups for our work at Withymead. Whilst six or so went off to replace some fencing, the rest of us were set to remove some trees (David Gordon was in his element with this task). Christine got very overheated doing a grand job stoking the bonfire. Meanwhile, Julia, Robin and I moved this huge pile of brash and logs to the fire in between keeping an eye out for David with his tree felling and Christine by the fire. It was a bit frustrating not to finish the job. We just needed a little longer. - Susan



Nettlebed Common:

We had two sessions on Priest Hill, Nettlebed Common and a superb job was done by the Green Gym in raking up cut material and weeding amongst the heather. A sight to behold! - Tony



Valley Road Chalk Bank:

There were two tasks: The first to replace damaged steps on the steep slope down to Valley Road. The second to clear invasive brambles and nettles around the saplings planted last November by the Henley Wildlife Group and The Guides. We found Peacock butterfly caterpillars in abundance.



Bishopswood:

As part of the Rotherfield football club initiative to fence their boundaries and prevent motorbike riders gaining access from Old Copse, we have started installing gates and fences in three areas. The fencing will not be a continuous run but will be short lengths to cut off the easy access routes and use the tree and scrub cover to discourage access at other points.



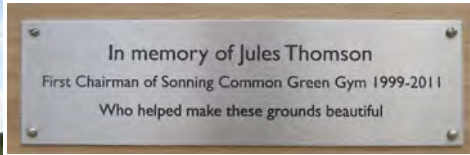
Greyhone Wood:

A beautiful new woodland site to practise our treefelling skills, whilst observing Tony's new safety instructions.



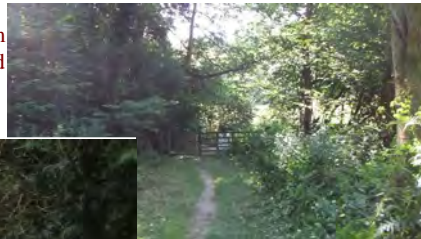
Memorial bench for Jules Thomson at Greys Court

On a lovely sunny day in August, Jules' family, friends, colleagues and the Green Gym gathered for a work session and the official installation of the memorial bench overlooking the arboretum and house at Greys Court. The bench was built at Aston Woodwares and was generously funded by both Greys Court and The Green Gym. We celebrated in true Green Gym style by hay raking in the arboretum and then serving coffee and cakes to all attendees.



Greys Court:

We have been improving the play areas to encourage visits from families. We have also been removing encroaching brambles and nettles from some of the paths around the estate.



Magazine contact: Chris Ash
chris.ash@btinternet.com
 Tel 0118 9723520
 The Green Gym
 C/o Health Centre, 39 Wood Lane,
 Sonning Common
 Enquiries - Robin - 0118 972 3528

Green Gym



Sonning Common

"THE LOPPER"

full of little cuttings.

Number 37 September 2013

Kennylands:

If you have not been to Kennylands Field recently you have missed a treat. The lavender has been absolutely stunning and this is thanks to Tony who has spent many hours tending it. Firstly he put down chicken wire round the small plants to prevent the (dear little) rabbits from feasting on them and then he made frequent trips during the dry spell with large containers of water to keep the plants going. He was rewarded with the sight of a veritable swarm of Small Copper butterflies enjoying the lavender as well as other butterflies. He also tells me that he has recently planted another 71 small plants and is nurturing even more at home! So be sure to come to the session at Kennylands on 21st September to appreciate fully his efforts and help to enhance this site. - Jane



A lovely row of Lavender



Lavender is for Bumble and Honey Bees as well as Butterflies

Gillotts Field:

Ragwort pulling time again: it was holiday season but in the end we were 7 including Sally Rankin who found pyramidal and bee orchids. Edward Sandars turned up to show us his birthday badge and thank us for his card, though strangely had no time to pull ragwort.

Julia

